

Fluorine lined check valve (H41FEP/PFA、H44FEP/PFA、H42FEP/PFA)

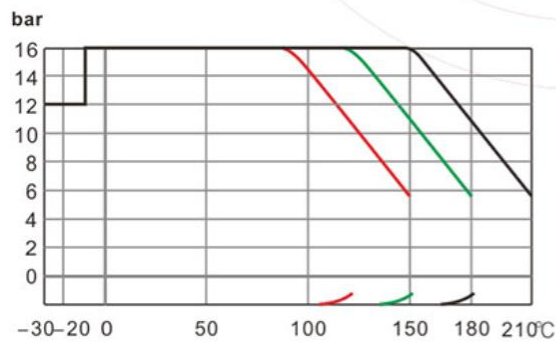
Main parts and materials

Name/Material	WCB	CF8	CF3	CF8M	CF3M
Body	WCB	CF8	CF3	CF8M	CF3M
Stem	WCB	CF8	CF3	CF8M	CF3M
Disc	WCB	CF8	CF3	CF8M	CF3M
Lined	FEP / PFA / PO / PTFE				
Seat	PTFE / RPTFE				
Bolt/Nut	B7/2H	B8/8	B8/8	B8M/8M	B8M/8M

Technical Specification

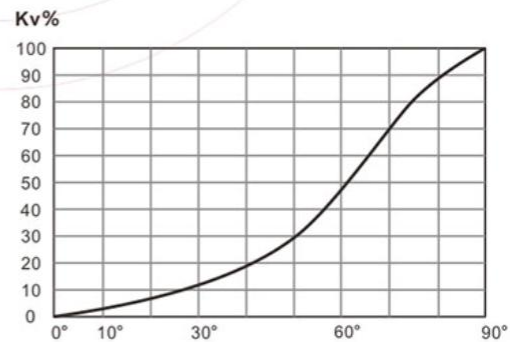
Design&Manufacture Standard	GB/T12235/GB/T12236		API 6D
FTF Dimension Standard	HG/T3704, GB/T12221		ASME B16.10
Flange standard	HG/T20592, GB/T9119		ASME B16.5, JIS B2220
Inspection & Test Standard	HG/T13927, JB/T9092		API 598
Normal Diameter	DN15~DN350		1/2"~14"
Normal Pressure	1.0MPa	1.6MPa	150LB
Test pressure	Shell Test	1.5MPa	1.5MPa
	High Pressure Test	1.1MPa	1.1MPa
	Low Pressure Test	0.6MPa	0.6MPa
Temperature Range	FEP:-29℃~120℃, PFA:-29℃~180℃, PTFE:-29℃~150℃		
Applicable Medium	Strong corrosion medium: Hydrochloric acid, Nitric acid, Hydrofluoric acid, Liquid chlorine, Sulfuric acid and Aqua regia etc.		

氟材料压力温度曲线
Pressure-Temperature Curve



真空 Vacuum: 0.1mbar
备注 Note: — PFA — PTFE — FEP

流量特性图
Flow Characteristic



阀位角度 Valve Position Angle
1Cv=1.167Kv



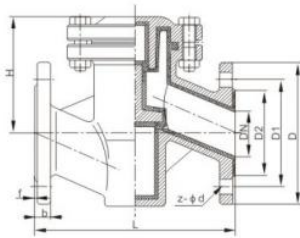
H41 F46



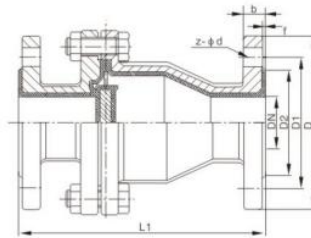
H42 F46



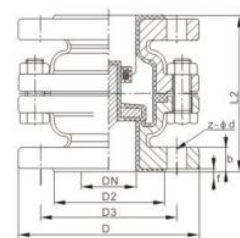
H44 F46



Fluorine through type check valve(H41F46)



Fluorine swing check valve(H44F46)



Fluorine lift check valve(H42F46)

The main connection size

DN (mm)	PNS (Inch)	L	L1	L2	D	D1	D2	f	b	Z-Φd
25	1	160	160	100	115	85	65	3	17	4-14
32	1-1/4	180	180	110	140	100	75	3	19	4-18
40	1-1/2	200	200	125	150	110	85	3	19	4-18
50	2	230	230	140	165	125	100	3	21	4-18
65	2-1/2	290	290	160	185	145	120	3	21	4-18
80	3	310	310	185	200	160	135	3	21	8-18
100	4	350	350	210	220	180	155	3	23	8-18
125	5	400	400	250	250	210	185	4	24	8-18
150	6	480	480	300	285	240	210	4	26	8-23
200	8	600	495	380	340	295	265	4	26	8/12-23
250	10	620	600	420	395	350	320	4	28	12-23/26